



Research and Reporting Show and Tell

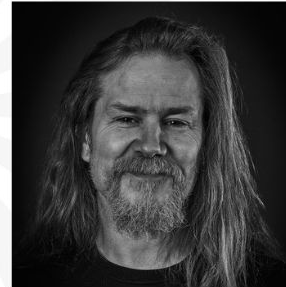
“Licence Shifts, Open Washing and Forking in Open Source”



Amanda Brock
CEO,
OpenUK



Dr Dawn Foster
Director of Data Science,
CHAOSS Project



James Governor
Analyst & Co-
Founder, RedMonk



Dr Jennifer Barth
Chief Research Officer,
OpenUK

Friday, 27th September, 16:00 - 17:30, Digital

openukresearchandreporting-september2024.eventbrite.co.uk





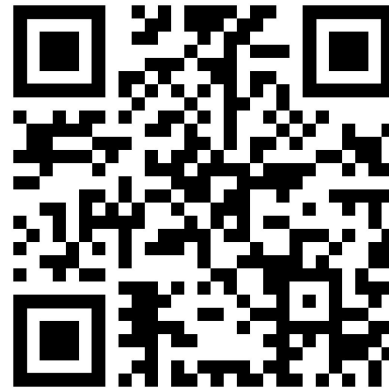
Code of Respect and Competition Policy

Visit OpenUK's website to view
our **Code of Respect and Competition Policy**

Contributor
Covenant
Code of Respect



Competition /
Antitrust
Compliance Policy



Save the date!

OpenUK Data Centres, Open Tech and Sustainability Round Table

Wednesday, 9th October,
14:00 - 15:30



Data Centres, Open Tech and Sustainability Round Table

Wednesday, 9th October 2024, 14:00 - 15:30

Committee Room G, House of Lords, London

Parliament Square London SW1A 0PW

Please arrive 30 minutes before for airport style security check

Sign up on Eventbrite: [OpenUKDataandOpenSourceRoundTable.eventbrite.co.uk](https://openukdataandopensource.roundtable.eventbrite.co.uk)
Capacity is limited

OpenUK is a not-for-profit company limited by guarantee registered in England at 8 Coldbath Square London EC1R 5HL. Company number 11209475. <https://openuk.uk/>



Sign up on Eventbrite

OpenUK Apprentice Meetup London #2

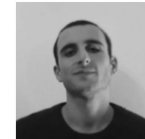
Wednesday, 9th October,
18:00 - 20:30

Open:UK Apprentice Meetup London #2



Apprentice - people who are interested in open source or have been involved in it less than 10 years

Host



Thomas Meadows
TestifySec

Host



Nelson Batsford
SUSE

Speaker



Alexander Scammon
G-Research

9 Oct

18:00 - 20:30

4th Floor, 2 Old Street Yard, London EC1Y 8AF

Sponsored by



#openukapprentice

meetup.com/openuk/events



Sign up on Meetup

Save the date!

OpenUK London Meetup #18 “Can Open Source Be a Business?”

Tuesday, 15th October,
18:00 - 20:45



OpenUK London Meetup #18
Tues 15th Oct, 18:30 - 20:45

Can Open Source Be a Business?

Speaker



Amanda Brock
CEO, OpenUK

Speaker



Lee Wright
GTM Leader Data
Infrastructure

Speaker



Paula Kennedy
Syntasso

Speaker



Matt Barker
Venafi

Sponsored By  **avanade**

#OpenUKMeetup

Sign up on Meetup

OpenUK Filling the Gap in the UK's Tech Sector Skills with Open Source Round Table

Thursday, 7th November, 14:00 - 15:30



Filling the Gap in the UK's Tech Sector Skills with Open Source Round Table

Thursday, 7th November 2024, 14:00 - 15:30
Committee Room G, House of Lords, London

Parliament Square London SW1A 0PW

Please arrive 30 minutes before for airport style security check

Sign up on Eventbrite: OpenUKSkillsRoundtable.eventbrite.co.uk Capacity is limited

OpenUK is a not-for-profit company limited by guarantee registered in England at 8 Coldbath Square London EC1R 5HL. Company number 11209475. <https://openuk.uk/>



Sign up on Eventbrite



Research and Reporting Show and Tell “AI & Skills”

See you at next
Show and Tell



Amanda Brock
CEO, OpenUK



Dr Jennifer Barth
Chief Research
Officer, OpenUK

Friday, 13th December 2024, 16:00 - 17:30 Digital

Speakers TBA

openuk.uk/showandtell





Research and Reporting Show and Tell

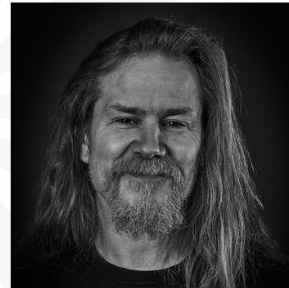
“Licence Shifts, Open Washing and Forking in Open Source”



Amanda Brock
CEO,
OpenUK



Dr Dawn Foster
Director of Data Science,
CHAOSS Project



James Governor
Analyst & Co-
Founder, RedMonk



Dr Jennifer Barth
Chief Research Officer,
OpenUK

Friday, 27th September, 16:00 - 17:30, Digital

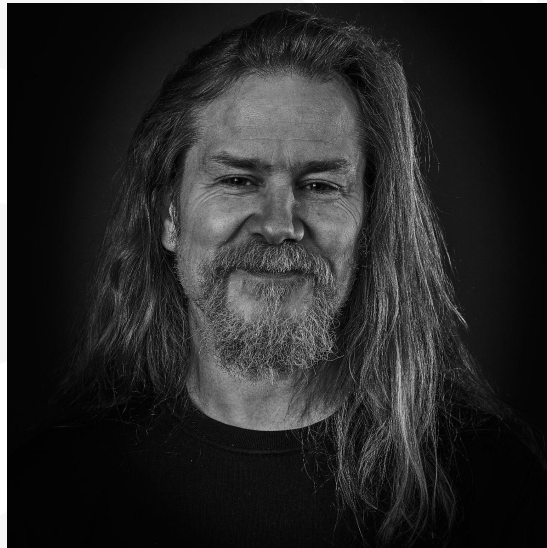
openukresearchandreporting-september2024.eventbrite.co.uk





Research and Reporting Show & Tell

“Redmonk Licence Shift Report”



Speaker

James Governor
Analyst & Co-Founder,
RedMonk

Open Source Business Models & License Changes



James Governor @monkchips



What is a business model?

“A design for the successful operation of a business, identifying revenue sources, customer base, products, and details of financing.”

OxfordLanguages

What is open source?

Open source projects are projects licensed with an OSI-approved open source license.

That's it. It's that simple, and there are no exceptions

See the list:

<https://opensource.org/licenses/>





TWO THINGS CAN BE TRUE

OPEN SOURCE IS NOT ITSELF A BUSINESS MODEL

Open source is a software development model, not a business model.

OPEN SOURCE CAN ENABLE BUSINESS MODELS

It is possible to monetize open source directly, to monetize it indirectly; it is possible to make money both from open source and with open source, in other words, but it's crucial to understand the difference between the two.



COMMON OSS BUSINESS MODELS

01

DUAL LICENSE

02

OPEN CORE

03

SERVICE/SUPPORT

04

MANAGED SERVICE / SAAS

OPEN SOURCE LICENSE STYLES

There are some that don't fit cleanly into these lists, but these are the major styles from least to most restrictive

01

PERMISSIVE

Examples

Apache, BSD, MIT

02

FILE-BASED

Examples

CDDL, EPL, MPL

03

COPYLEFT (AKA RECIPROCAL)

Examples

AGPL, GPL

WHY OPEN SOURCE?

- Accessibility and distribution advantages
- Developer and enterprise affinity for open source
- Community expansion and enablement
- Lowered friction for commercial software partners
- Potential for greater security
- Optionally: external code contributions

WHY NOT OPEN SOURCE?

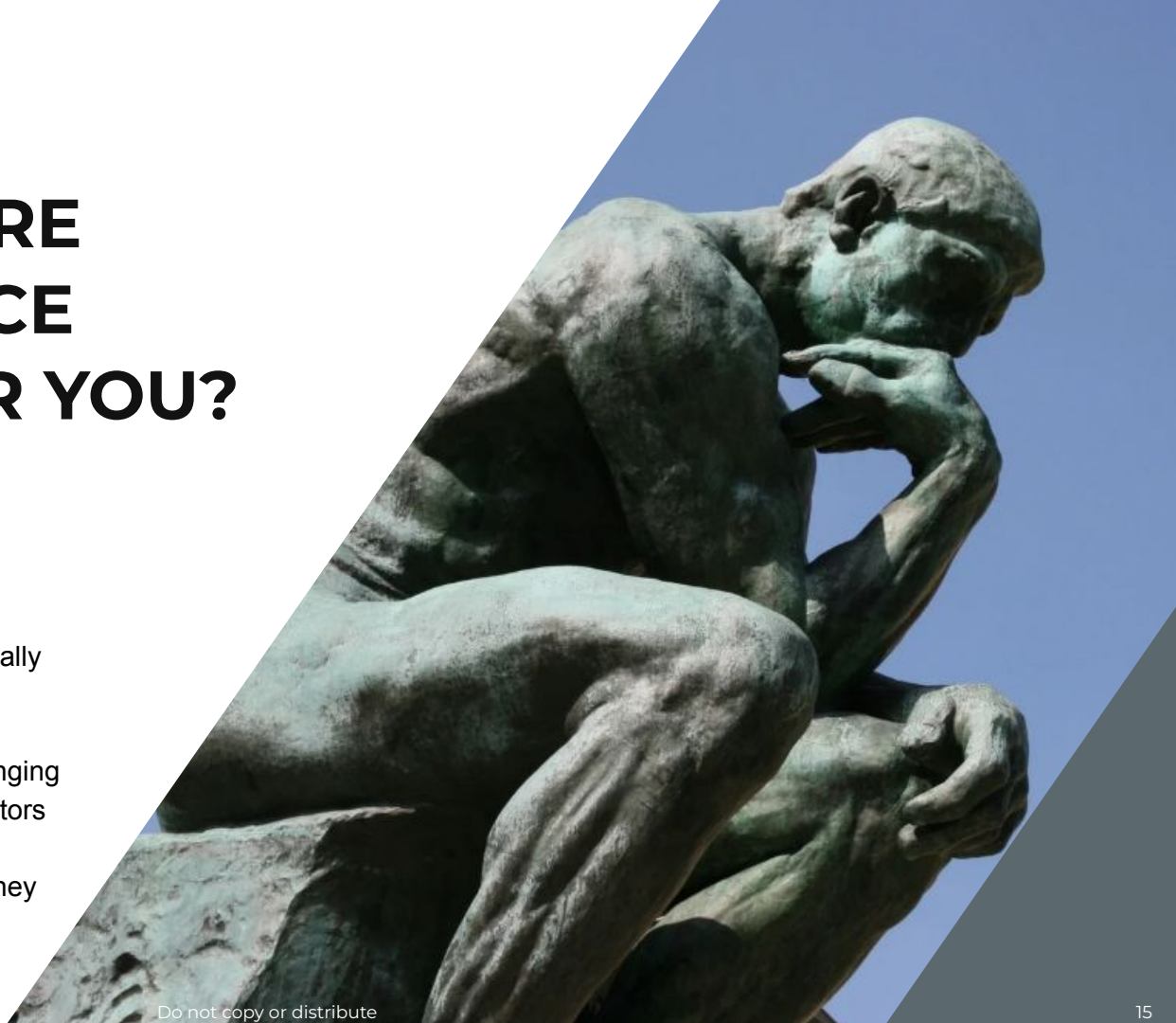
- Few barriers to competitive implementations
- Decreased purchasing incentive for buyers
- It's hard, often thankless work
- It's expensive work
- Investors may not be aligned with project needs



ARE YOU SURE OPEN SOURCE IS RIGHT FOR YOU?

ARE YOU *REALLY* SURE?

1. Pulling back from open source is problematic
2. Changing the OSS license is equally problematic
3. Open source makes traditional commercialization models challenging
4. Open source can enable competitors
5. Open source requires significant investments in both time and money



What happens when businesses change from **open source** to **proprietary** licenses?



mongoDB®



elastic



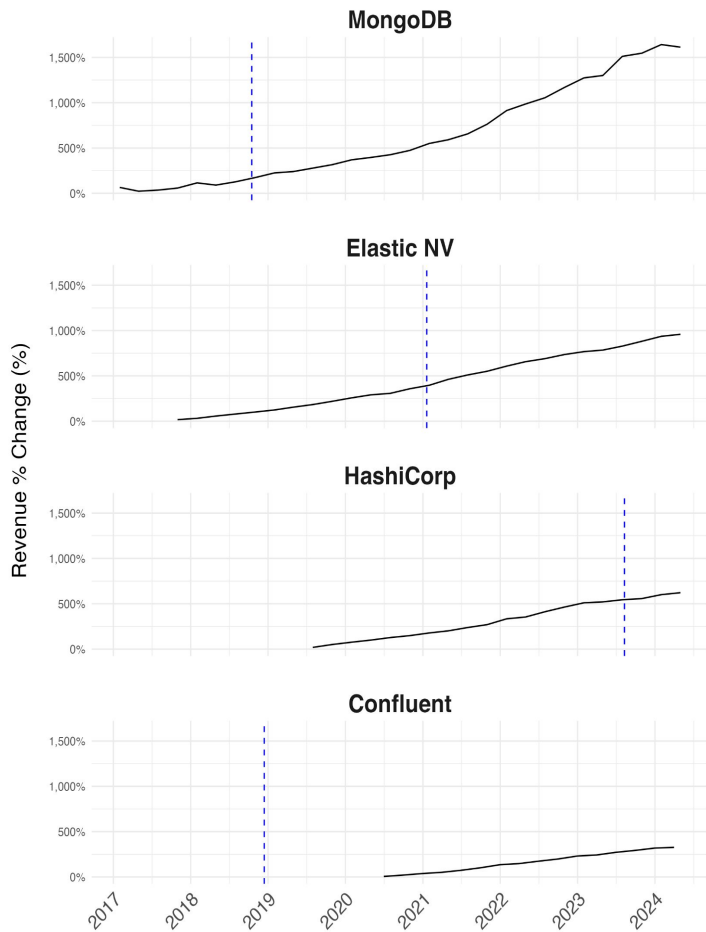
HashiCorp



CONFLUENT



Revenue % Change Over Time



“From this data set, we see that revenue increases after the license change, but **the rate of increase is not materially different** than the rate of increase prior to the license change.”

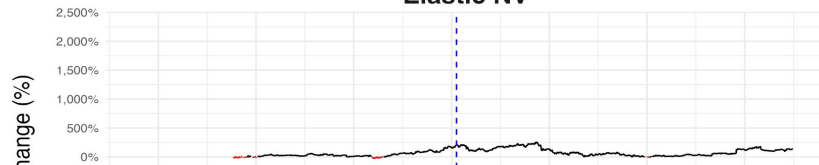
- Rachel Stephens,
RedMonk

Market Cap % Change Over Time

MongoDB



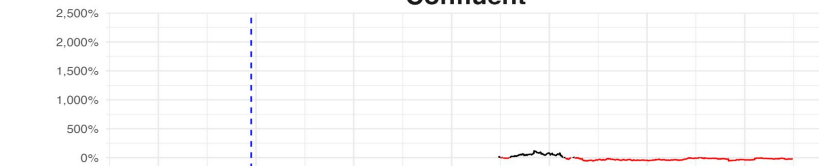
Elastic NV



HashiCorp



Confluent



Market Cap % Change Over Time

MongoDB



Elastic NV



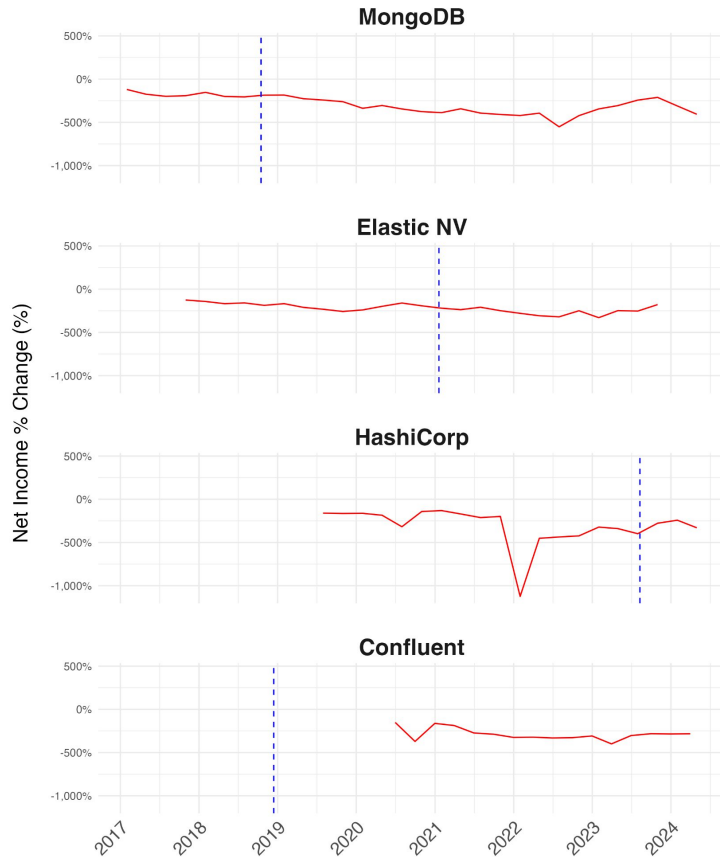
HashiCorp



Confluent



Net Income % Change Over Time



“Finally, it’s worth noting that **none of these companies are profitable yet**. This means that valuation is primarily driven by expected growth in future cash flow.”

- Rachel Stephens,
RedMonk



Valkey



JAMES GOVERNOR'S MONKCHIPS

Open Source Foundations Considered Helpful

By James Governor | @monkchips | September 13, 2024



In the era of the open source rug pull, the role of open source foundations is more important than ever. The “rug pull” here refers to companies that have used open source as a distribution mechanism, building a community and user base, before changing the license to be restricted, rather than truly open source. “This is capitalism, yo. We’ve got shareholders to satisfy. It’s time to relicense that software, move to a Business Source license.”

QUESTIONS?



Research and Reporting Show & Tell

“Forking Research”



Speaker

Dawn Foster

**Director of Data Science,
CHAOSS Project**

License Changes and Forking Data

OpenUK Research Show & Tell Sept 2024

Dr. Dawn M. Foster

Director of Data Science for CHAOSS

 <https://chaoss.community/>

 <https://github.com/chaoss>

 @chaoss@fosstodon.org

 <https://fastwonderblog.com/>

 <https://github.com/geekygirldawn>

 @geekygirldawn@hachyderm.io

Thank You!



**ALFRED P. SLOAN
FOUNDATION**



**FORD
FOUNDATION**

Whoami



- Geek, traveler, reader
- 20+ yr tech career focused on open source (VMware, Intel, Puppet, ...)
- OpenUK Board
- CHAOSS Board and Maintainer
- CNCF TAG Contrib Strategy co-chair
- PhD on Linux kernel collaboration

Photos by Mom, [Josh Bancroft](#), [Don Park](#)

Assessing Organizational Participation

Company Controlled OSS

A single company
in control has a
higher risk of forks
and other disruptions.



Photo by Jan Fidler - CC BY 2.0

Organizational Participation

Projects dominated by a single organization might be less sustainable and more likely to fork.

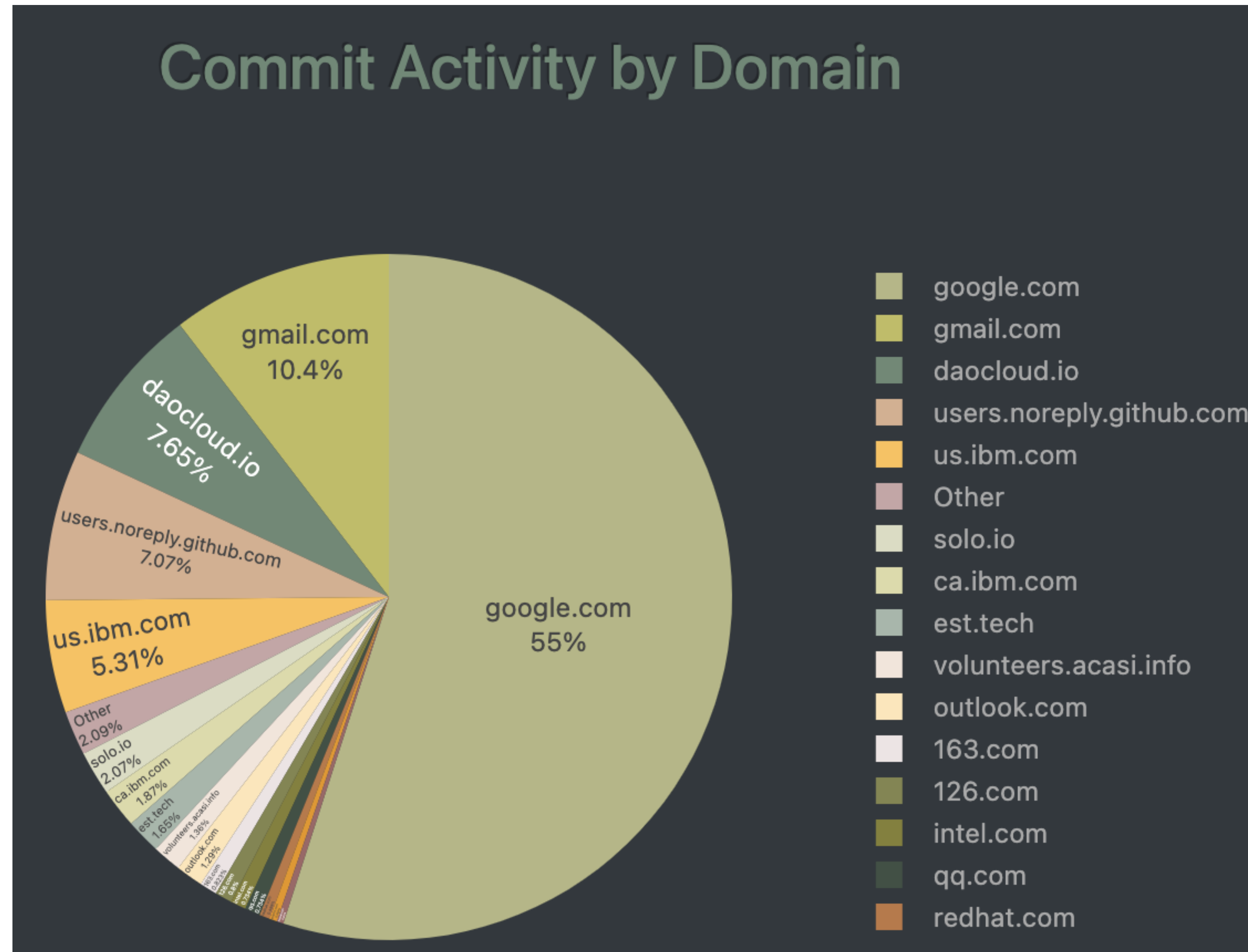
Key metrics:

- Elephant Factor
- Organizational Influence
- Organizational Diversity

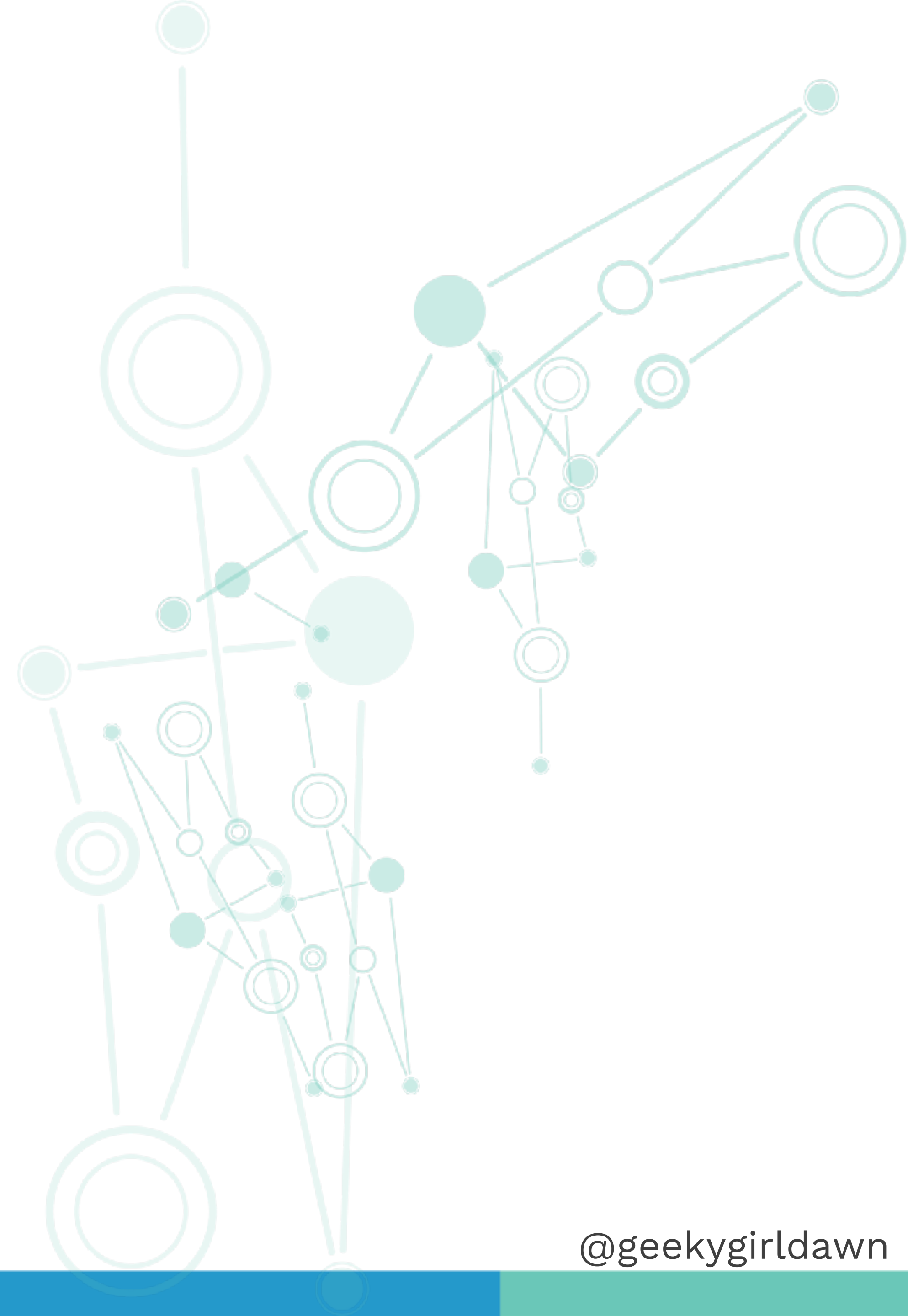


Organizational Participation

Getting clean organizational affiliation data can be a challenge. It just needs to be good enough to understand the dominant players.



Impacts and Data



About the Data (Contributions Welcome!)

Caveat:

- All of this is WIP data that hasn't been validated by the projects.

Current Focus:

- Organizations / Employers (challenging to gather)

Commits:

- Used for thresholds

Additions / Deletions:

- Lines of code for magnitude

Coming Soon:

- Additional community health measurements

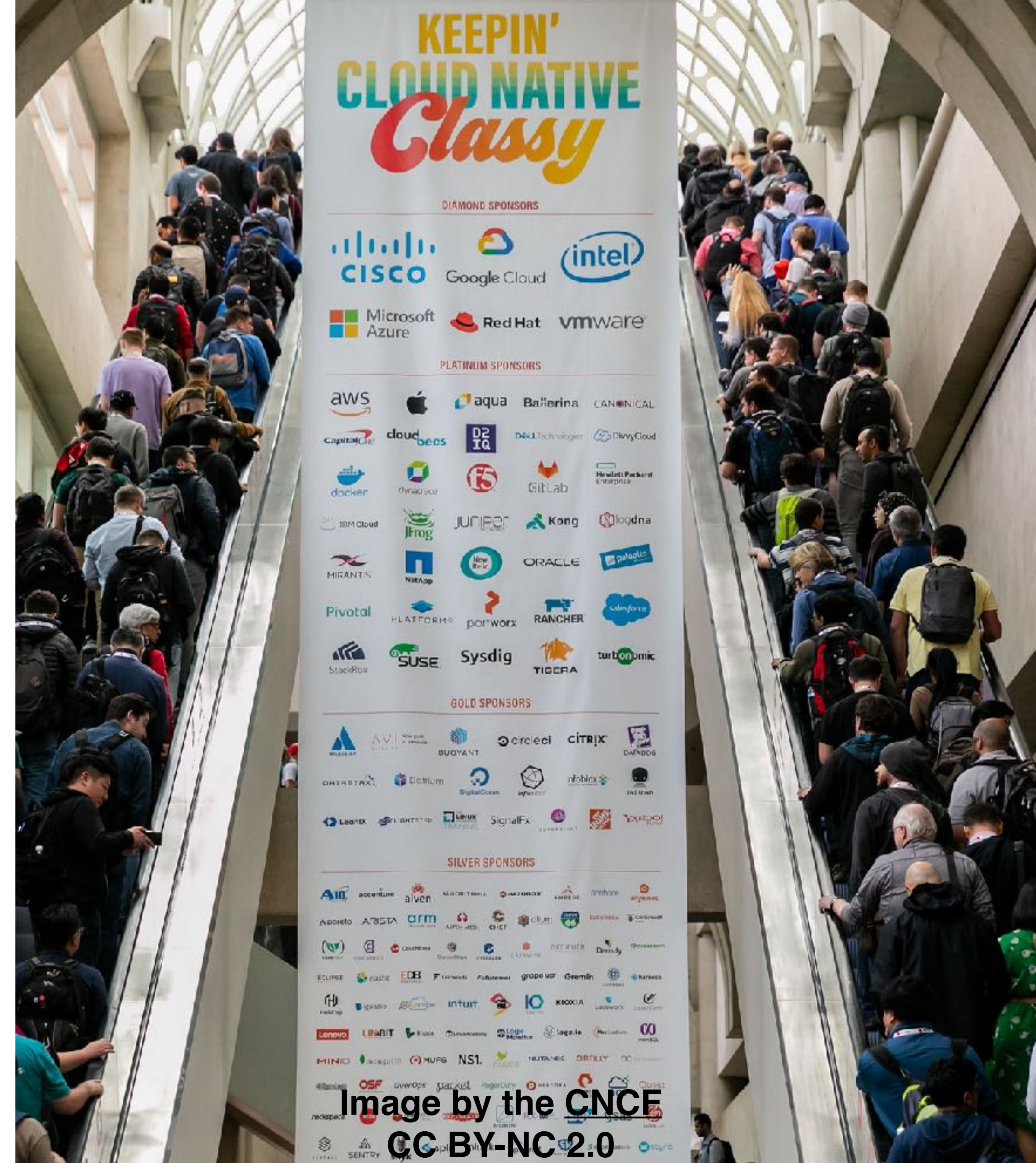


Image by the CNCF
CC BY-NC-2.0

Relicensing: Users Drove Fork

Relicense had bigger impact on users than contributors.

Key Dates:

- 2021-02-03: Elastic relicenses to SSPL & Elastic
- 2021-04-12: OpenSearch fork owned by AWS
- 2024-08-29: Elastic adds AGPL
- 2024-09-16: OpenSearch moves under LF



elasticsearch

 OpenSearch

Elasticsearch repo (<https://github.com/elastic/elasticsearch>)

1 year before orig relicense (2020-02-03 to 2021-02-03)

- Elastic employees with ≥ 10 commits (67 people):
 - 96% of total additions
 - 97% of total deletions
- Other people with ≥ 10 commits (3 people):
 - 0.3% of total additions
 - 0.1% of total deletions

1 year before AGPL relicense (2023-08-29 to 2024-08-29)

- Elastic employees with ≥ 10 commits (99 people):
 - 95% of total additions
 - 97% of total deletions
- Other people with ≥ 10 commits (1 person):
 - 0.01% of total additions
 - 0.03% of total deletions

OpenSearch Repo (<https://github.com/opensearch-project/OpenSearch>)

First Year of the Fork (2021-04-12 to 2022-04-12)

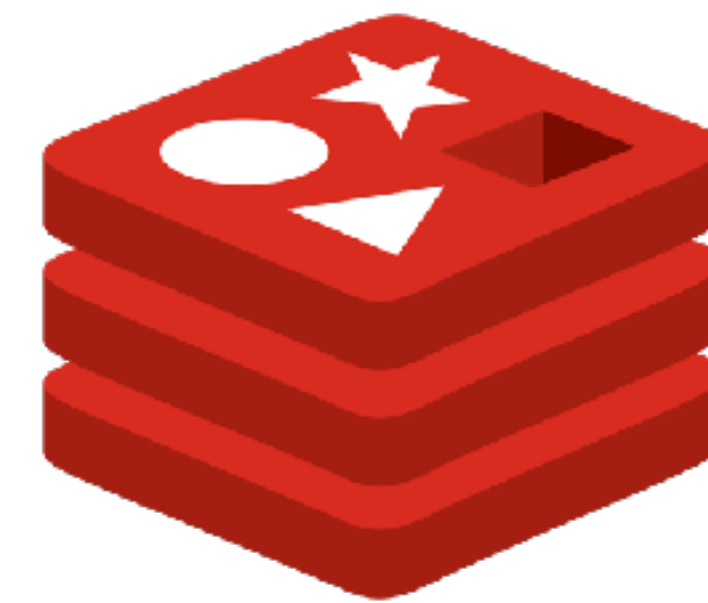
- Amazon / AWS Employees with ≥ 10 commits (7 people):
 - 80% of total additions
 - 91% of total deletions
- Other people with ≥ 10 commits (2 people):
 - 7% of total additions
 - 4% of total deletions

Final Year under AWS before LF (2023-09-16 to 2024-09-16)

- Amazon / AWS Employees with ≥ 10 commits (40 people):
 - 63% of total additions
 - 65% of total deletions
- Other people with ≥ 10 commits (6 people):
 - 11% of total additions
 - 13% of total deletions

Relicensing: Contributors Drove Fork

The external contributors making significant contributions to Redis have moved to Valkey.



redis



Valkey

Key Dates:

- 2024-03-20: Redis relicenses to SSPL & RSAL
- 2024-03-28: Valkey fork launched as an LF project

Redis Repo (<https://github.com/redis/redis>)

1 year before relicense (2023-03-20 - 2024-03-20)

- Redis Employees with ≥ 5 commits (6 people):
 - 80% of total additions (189,656)
 - 74 % of total deletions (83,122)
- Other people with ≥ 5 commits (12 people):
 - 12% of total additions
 - 15% of total deletions

After relicense (2024-03-20 - 2024-08-21)

- Redis Employees with ≥ 5 commits (7 people):
 - 75% of total additions (38,270)
 - 72% of total deletions (10,464)
- Other people with ≥ 5 commits (0):

Valkey Repo (<https://github.com/valkey-io/valkey>)

After 2024-03-28 Fork (until 2024-08-20):

- Companies with ≥ 5 commits (27 people at 9 companies):
- 79% of total additions (70,708)
- 76% of total deletions (50,158)

People	Company	Commits	Additions	Addition%	Deletions	Deletion%
2	Google	27	40191	44.82%	38406	58.35%
12	Amazon	122	15072	16.81%	5772	8.77%
2	Alibaba	6	303	0.34%	51	0.08%
2	ByteDance	5	3913	4.36%	562	0.85%
4	Huawei	66	3205	3.57%	2764	4.20%
1	Tencent Cloud	46	1690	1.88%	703	1.07%
1	Intel	10	559	0.62%	455	0.69%
2	Ericsson	37	5671	6.32%	1372	2.08%
1	@gnet-io	8	104	0.12%	73	0.11%

Relicensing: Users Drove Fork

OpenTofu contributors were not Terraform contributors, so there was an impact to users, but not contributors.

Key Dates:

- 2023-08-10: Terraform relicenses to BSL
- 2023-09-05: OpenTofu launched as fork under the LF



Terraform Repo (<https://github.com/hashicorp/terraform>)

1 year before relicense (2022-08-10 - 2023-08-10)

- HashiCorp Employees with ≥ 5 commits (21 people):
 - 93% of total additions
 - 95% of total deletions
- Other - people with ≥ 5 commits (2):
 - 0.04% of total additions
 - 0.04% of total deletions

After relicense (2023-08-10 to 2024-08-10)

- Hashicorp employees with ≥ 5 commits (24 people):
 - 90% of total additions
 - 93% of total deletions
- Other people with ≥ 5 commits (2 people - 1 might be employee):
 - 0.05% of total additions
 - 0.01% of total deletions

OpenTofu Repo (<https://github.com/opentofu/opentofu>)

After 2023-09-05 fork
until 2024-09-05:

- Companies with ≥ 5 commits (27 people at 11 companies):
 - 80% of total additions
 - 82% of total deletions

People	Company	Commits	Additions	Addition%	Deletions	Deletion%
1	Chainguard	6	266	0.17%	93	0.10%
3	Harness	17	2948	1.85%	366	0.40%
6	Env0	99	26507	16.61%	12248	13.23%
8	Spacelift	305	81271	50.91%	59111	63.87%
1	@claranet	6	118	0.07%	20	0.02%
1	@Cooby-inc	5	72	0.05%	69	0.07%
1	Hangzhou Dianzi University	6	891	0.56%	242	0.26%
3	Red Hat	15	1605	1.01%	159	0.17%
1	@OpenTofu	44	12350	7.74%	3373	3.64%
1	@lessops	6	2017	1.26%	226	0.24%
1	@nvdnc	5	68	0.04%	11	0.01%

Resources

chaoss.community

github.com/chaoss/wg-data-science

[github.com/chaoss/wg-data-science/tree/main/dataset/
license-changes/fork-case-study](https://github.com/chaoss/wg-data-science/tree/main/dataset/license-changes/fork-case-study)

chaoss.community/about-chaoss-practitioner-guides

Final Thoughts

As companies face increasing pressure to generate revenue from open source efforts, it's likely that we'll continue to see an increase in license changes and forks.

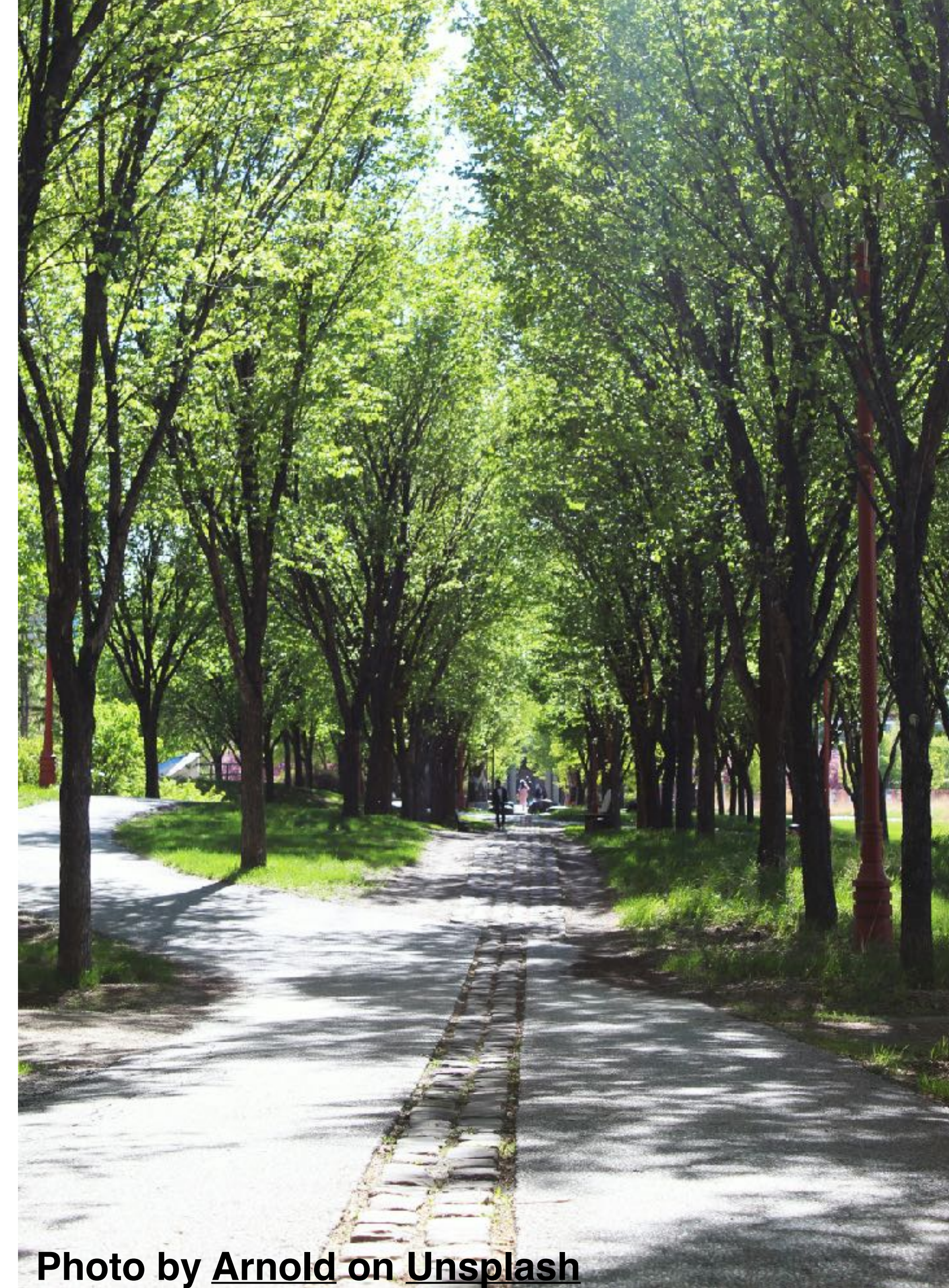








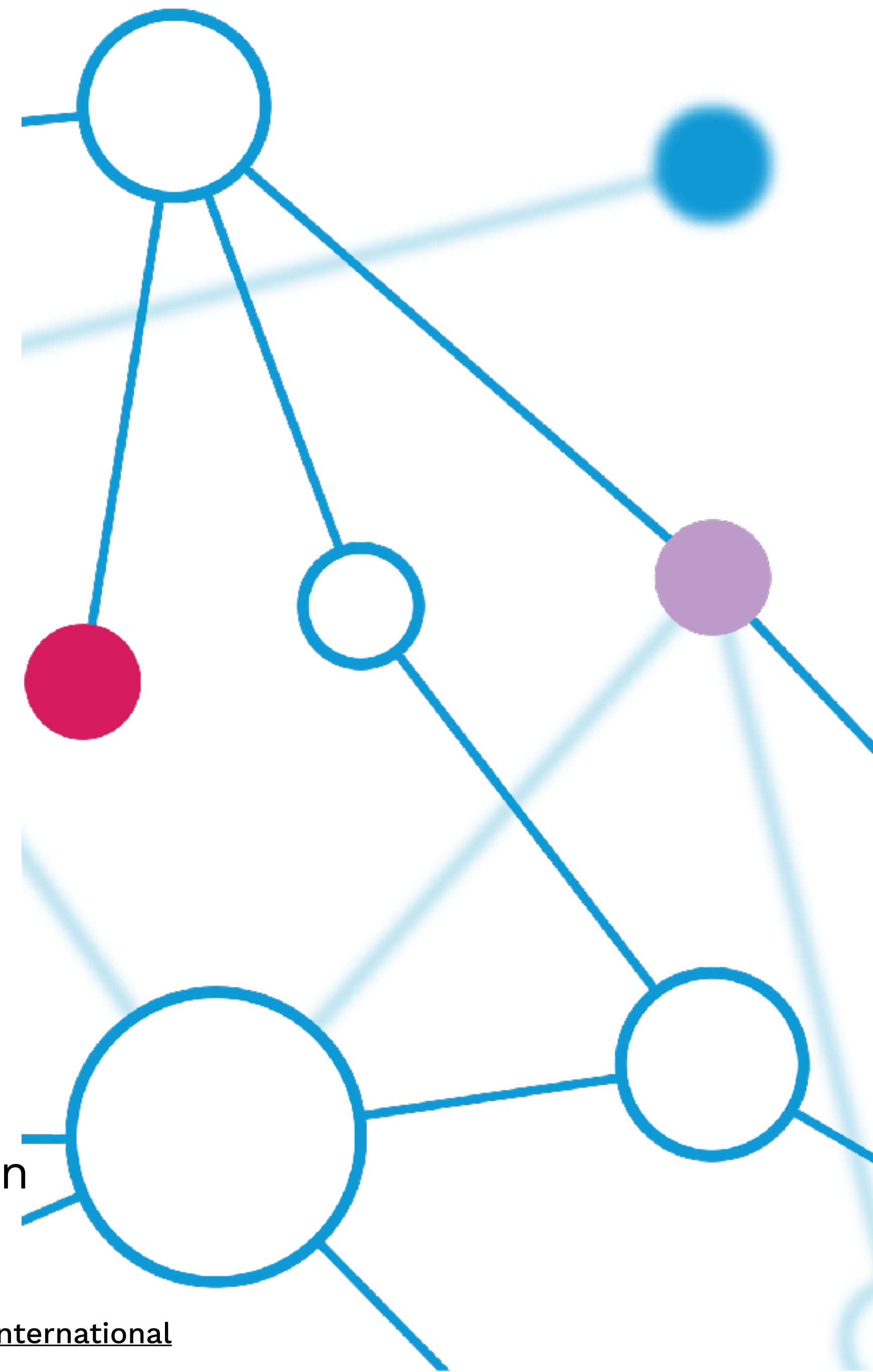
Photo by [Arnold](#) on [Unsplash](#)

THANK YOU!

Any Questions?

 <https://chaoss.community/>
 <https://github.com/chaoss>
 @chaoss@fosstodon.org

 <https://fastwonderblog.com/>
 <https://github.com/geekygirldawn>
 @geekygirldawn@hachyderm.io





Research and Reporting Show & Tell

“Shaping Markets Report”



Speaker

Amanda Brock
CEO, OpenUK

The background features a central sunburst pattern with rays radiating outwards. The rays are light gray and white, creating a sense of depth and focus. In each of the four corners, there are decorative blue and white geometric shapes that resemble stylized brackets or corner ornaments.

Any Questions?



Research and Reporting Show and Tell “AI & Skills”

See you at next
Show and Tell



Amanda Brock
CEO, OpenUK



Dr Jennifer Barth
Chief Research
Officer, OpenUK

Friday, 13th December 2024, 16:00 - 17:30 Digital

Speakers TBA

openuk.uk/showandtell



Thank you

Follow OpenUK at :

<https://openuk.uk/>

@openuk_uk

<https://www.linkedin.com/company/587929/>

Sign up to newsletter at : <https://openuk.uk/>

Follow me at:

@amandabrockUK

<https://www.linkedin.com/in/amandabrocktech/>

Contact: amanda.brock@openuk.uk

OpenUK is a not-for-profit company limited by guarantee
Registered office, 8 Coldbath Square, London EC1R 5HL
Registered Number 11209474, VAT Number GB379697512



© OpenUK 2024

